

20/21  
PRODUCTS

Product Catalogue

## Waste chute system

Type ( WCS )



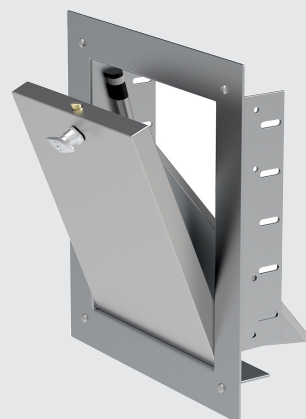
**Khedr Trust**  
ALL AIR PRODUCTS

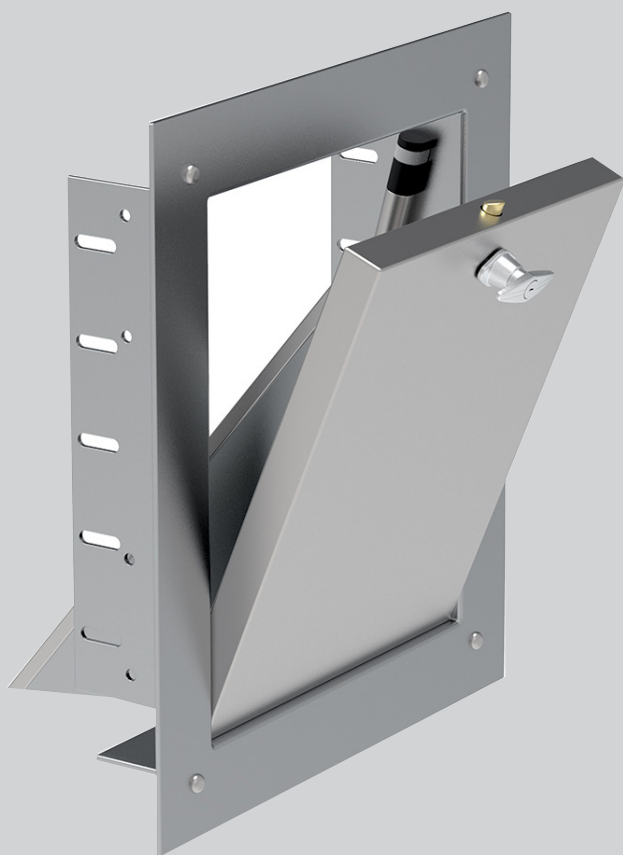
Waste chute system products  
are manufactured by



“ Your comfort is  
our priority ”

[www.khedr-eg.com](http://www.khedr-eg.com)





### Models

- Galvanized steel.
- Stainless steel.



### Finish

- Standard Finish – White.



## Waste chute system

### Model Design

Khedr waste chutes are very simple way for controlling waste for different application.

### Health & Safety

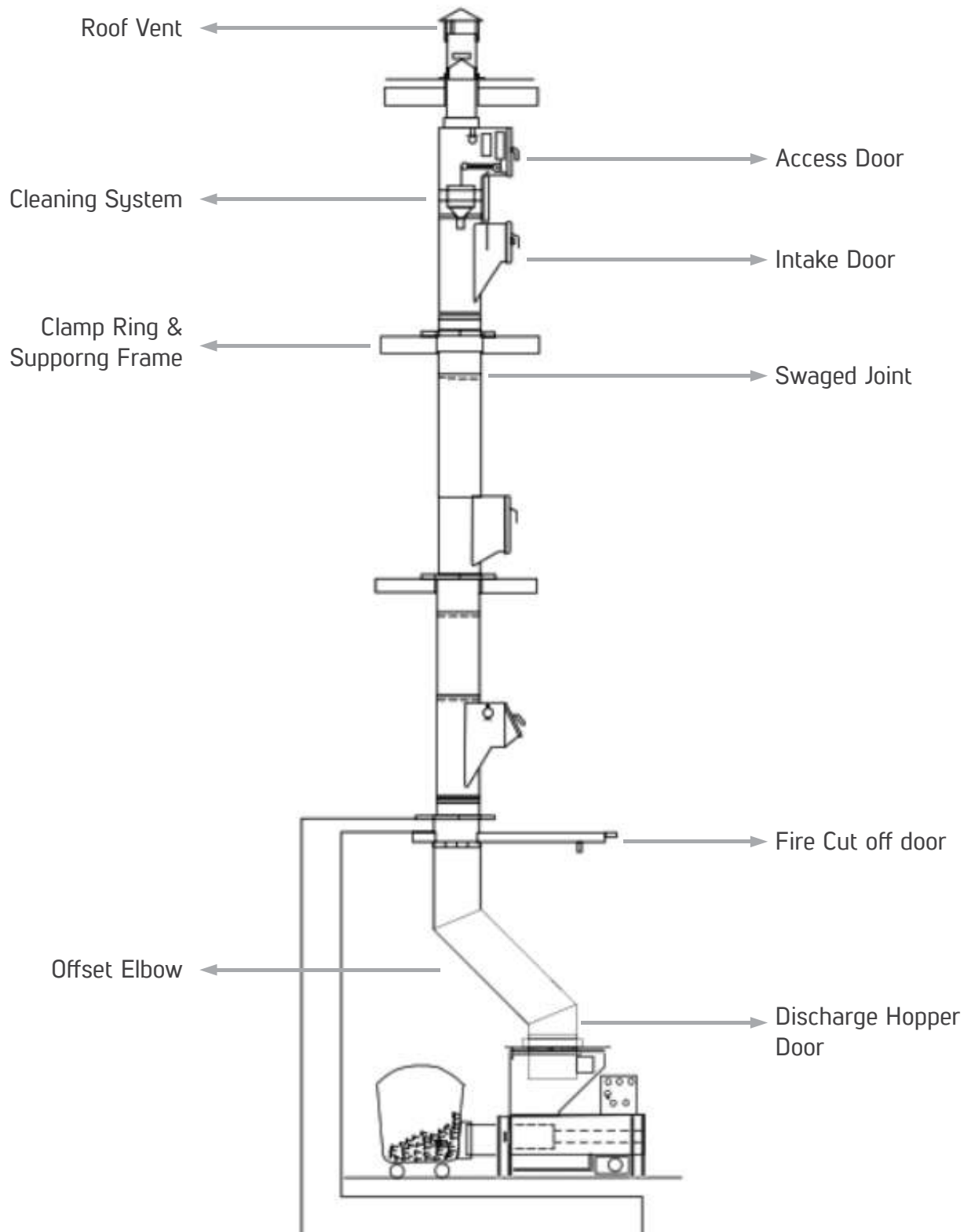
Waste chutes meets the requirements of environmental health and safety.

### Various Apps

Waste chutes can be used for various applications like Hotels, Hospitals and residential towers .

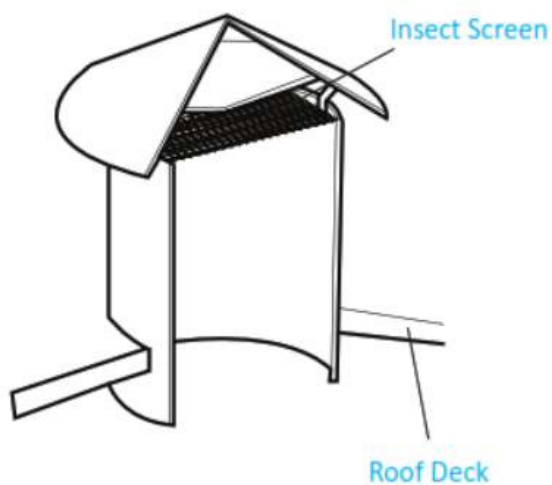
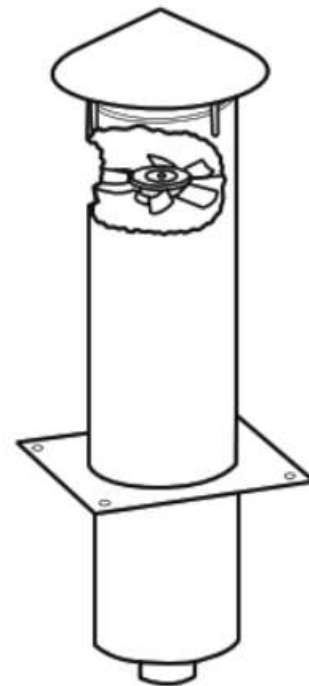
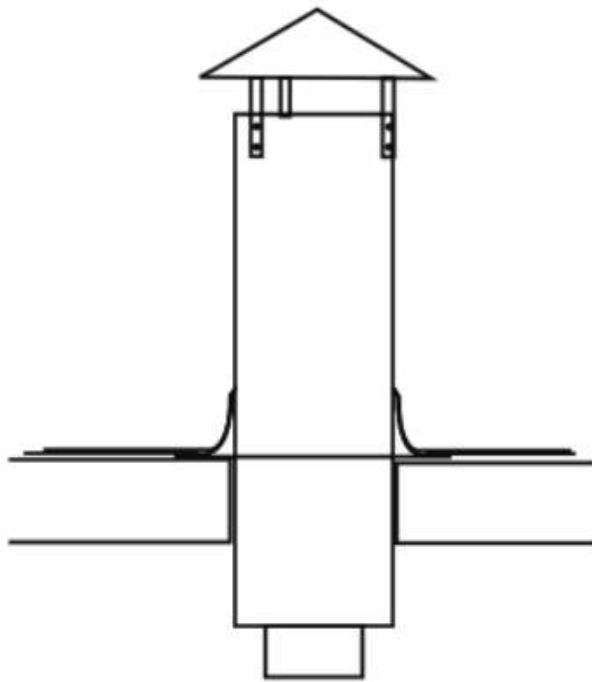
### Materials

Waste chutes can be made from Galvanized / stainless steel form different thickness

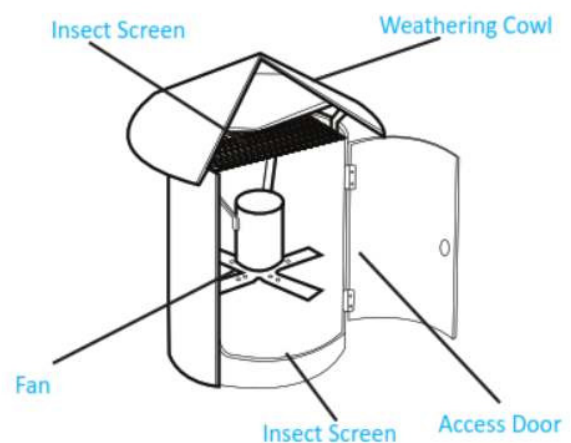
**- Construction****Components of waste chute system**

## Roof Vent

Above roof level vent is very useful to maintain flow of fresh air within the waste chute. The vent helps to prevent bad odors and gases inside buildings. Optional axial fan can be used to improve the venting of chute.



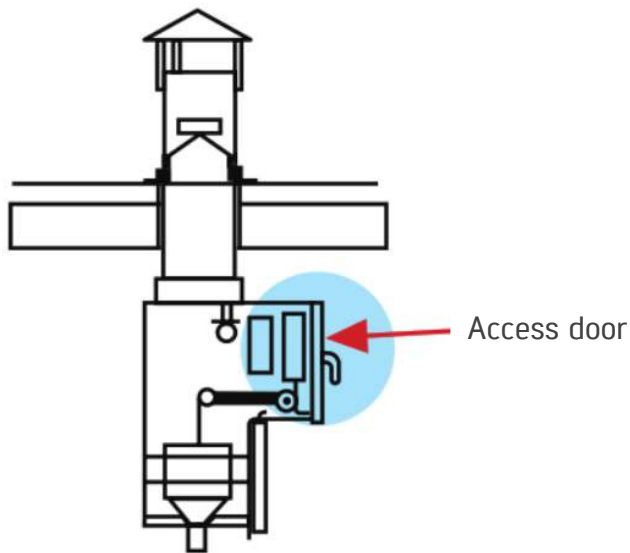
Standard Venting



Mechanical Venting

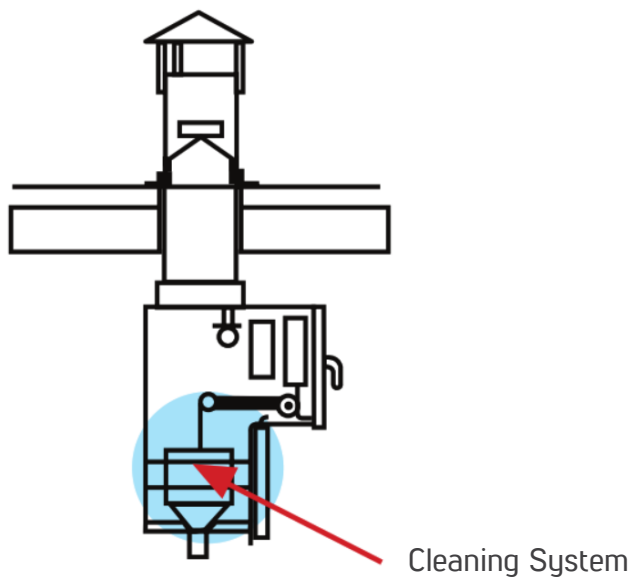
## Access Door

Access door is located below the roof vent on the last floor. It is used for accessing the equipment in case of maintenance of the chute.



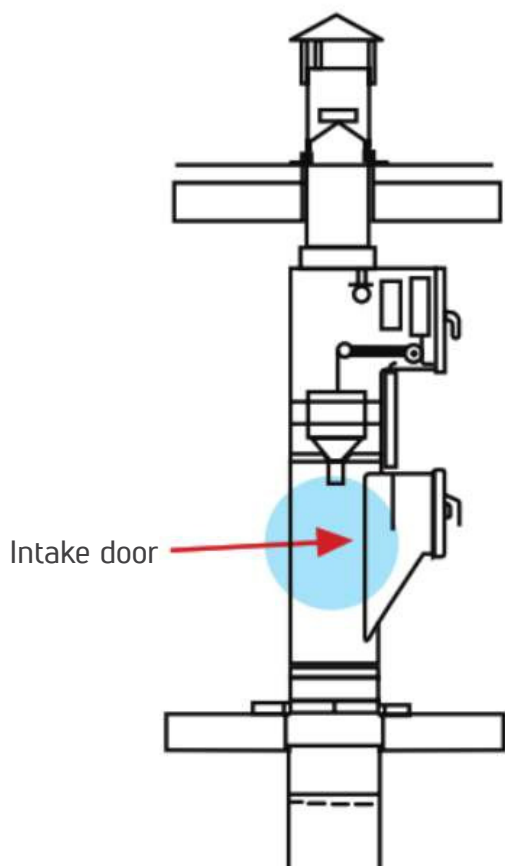
## Cleaning System

Chute cleaning system specifically designed to clean the total vertical length of the internal surface of all chutes.



## Intake Door

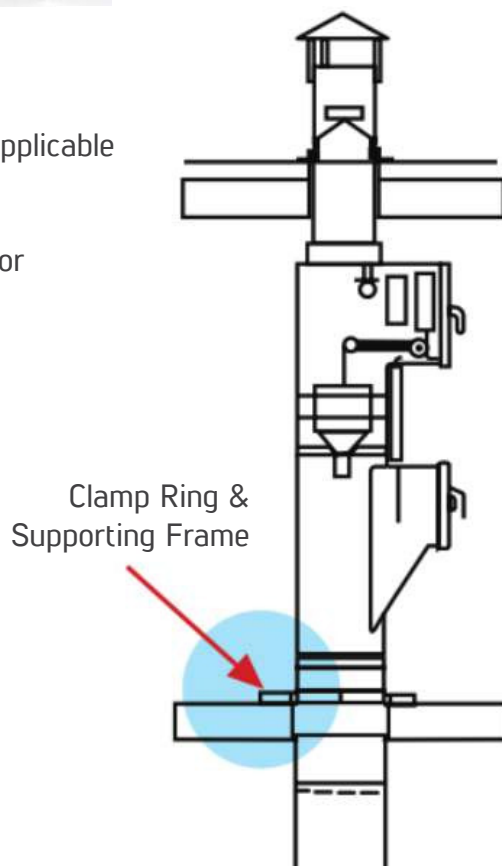
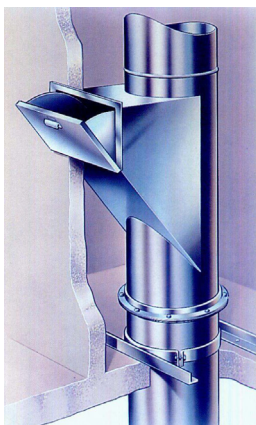
For each floor there is an intake door.



## Clamp Ring & Supporting Frame

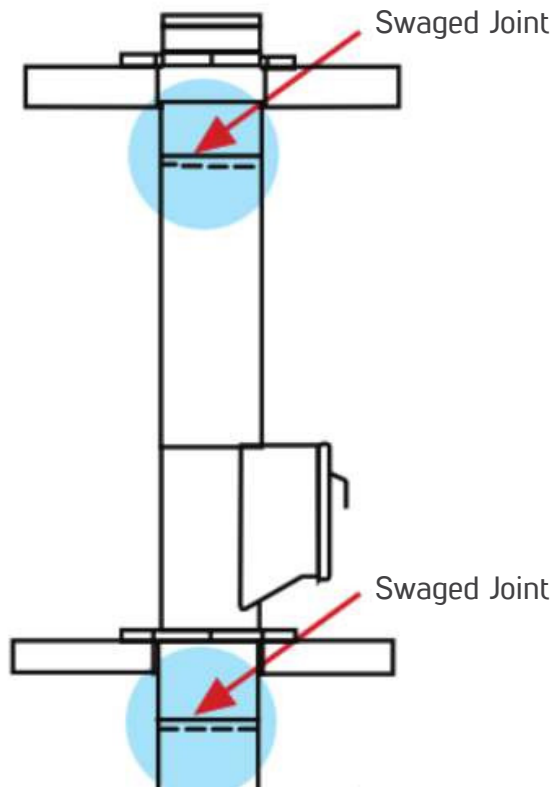
Cut, shaped and drilled from 35x35x3 mm or (other sizes are applicable for use) Mild steel angle with a rigid, welded construcion.

The frame holds a metal clamp band. The frame is rust proof for internal use and hot dip galvanized forexternal use.



## Swaged Joint

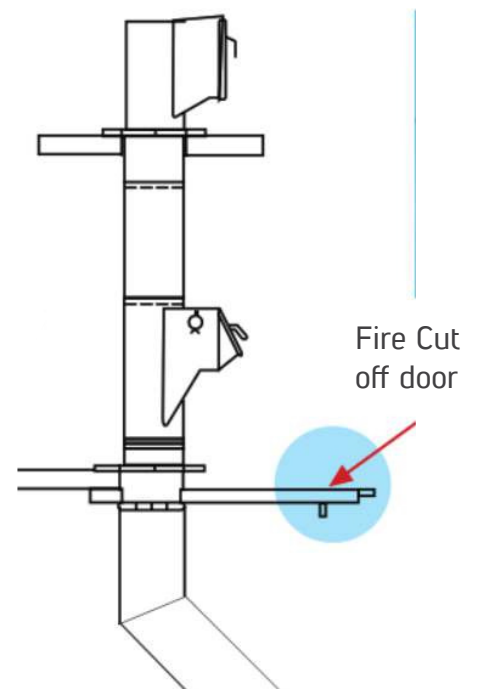
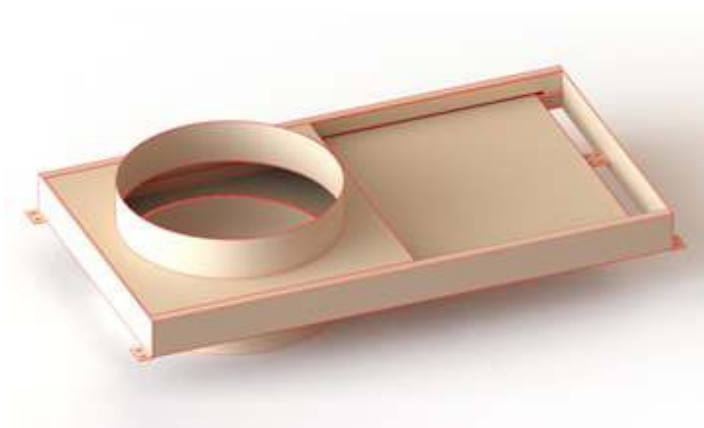
Used to join certain section of duct.



## Fire Cut off door

Fire Cut Off Door has a horizontal rolling door held by a spring on each side connected to a fusible link.

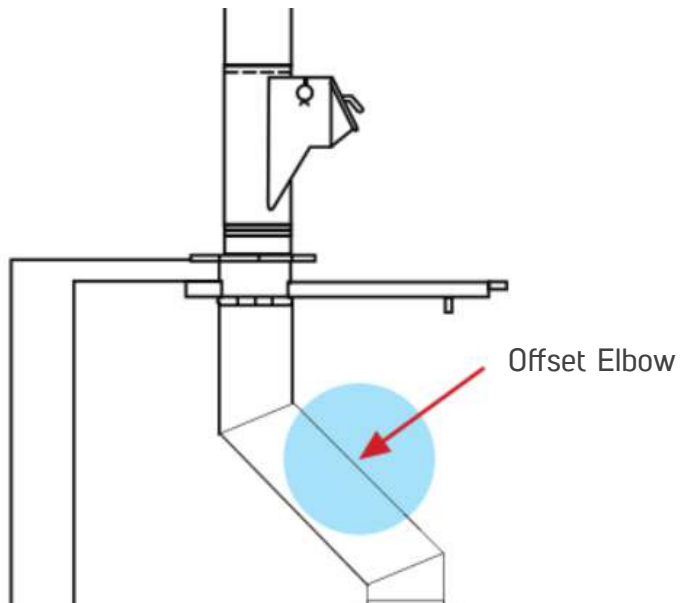
In case of excessive heat (or fire) the link gets fused at 165° F (68°C) causing the door to roll shut.





### Offset Elbow

Factory fabricated from the same material as the waste chute, but in a heavier gauge to withstand the impact of falling bags. Offsets should not be less than 45° from the horizontal.



### Discharge Hopper Door

Discharge Hopper doors are provided in the service room and are designed to eject loose or bagged waste (discharge garbage) directly into a container.



Other Products are provided by Khedr Trust Co.

#### Diffusers & Grills

Slot Linear Diffuser  
Eye Ball Diffuser  
Circular Ceiling Diffuser  
Swirl Diffuser  
Perforated Ceiling Diffuser  
Jet Diffuser  
Square Ceiling Diffuser  
Disc Valve Diffuser  
Linear Bar Grill  
Supply / Return Grill  
Door Grill

#### Louvers

Aluminum Louver  
Sand Trap Louver

#### Dampers

Volume Damper  
Fire Damper  
Smoke Motorized Damper  
Shutter Damper  
Pressure Relief Damper

#### Special Parts

Sound Attenuator  
Plenum Box

#### Duct Works

Galvanized Steel Duct  
Black Steel Duct  
Stainless Steel Duct  
Spiral Duct  
Flexible Duct  
Canvas  
Flanges  
Flexible Duct Connector



# Khedr Trust

ALL AIR PRODUCTS



Alqanater Alkhairia roads, Industrial Area, Behind Cocacola Co., Cairo, Egypt

Mailing Address : P.O.Box 13621, Cairo 11511 - Egypt

Tel : +202 42452022

Mob : +2010 29999054 / +2010 29999056

+2010 29999057 / +2010 29999058

E-Mail : info@khedr-eg.com

   / khedr.co

www.khedr-eg.com

